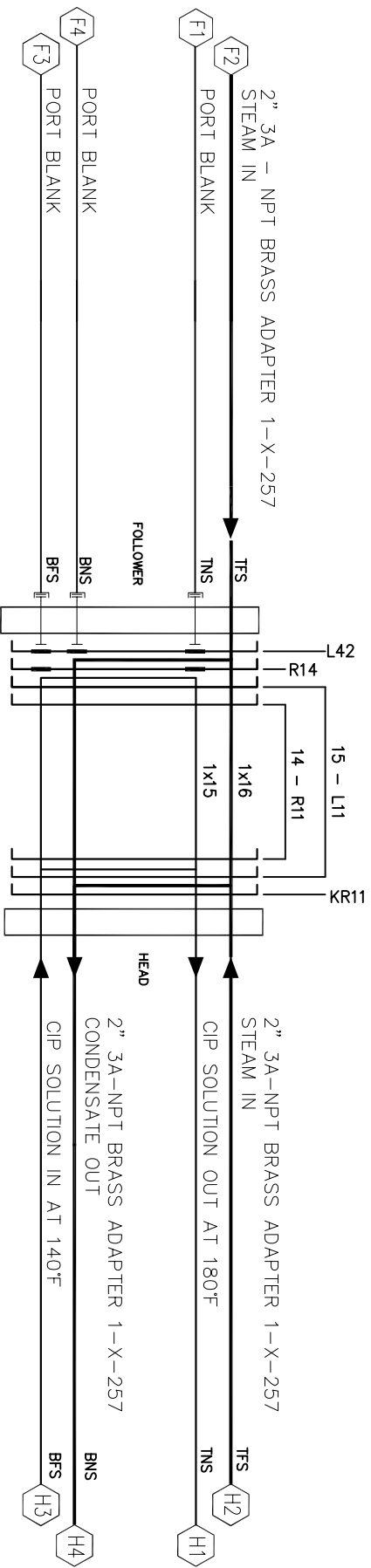


DUTY
 HEAT 383 US GALLONS OF WATER FROM 140°F TO 180°F IN 15 MINUTES
 AT A RECIRCULATION RATE OF 100 USGPM USING DRY & SATURATED STEAM
 ENTERING AT 10 PSIG (239.40°F)

FRAME SIZE NO.: 2
 NO. OF THE BARS: 6
 LENGTH OF THE BARS: 13-1/4"
 MINIMUM COMPRESSED PLATAGE: 6.144"
 MINIMUM COMPRESSED PLATAGE: 5.760"
 EMPTY WEIGHT: 499 LBS.
 FLOODED WEIGHT: 537 LBS.
 MAX. OPERATING PRESSURE: 100 PSIG
 TEST PRESSURE: 130 PSIG
 MAX. OPERATING TEMPERATURE: 239°F
 GASKET MATERIAL: MEDIUM NITRILE RUBBER (PARAGRIL)
 BUSH MATERIAL: 316SS
 ALL LIQUID CONNECTIONS ARE 2" 3A BEVEL SEAT MALE
 ADME THREADED THROUGH SOLUTION SIDE: 3.40 PSI
 PRESSURE LOSS THROUGH STEAM SIDE: 0.04 PSI



T.N.S. = TOP NEAR SIDE
 T.F.S. = TOP FAR SIDE
 B.F.S. = BOTTOM FAR SIDE
 B.N.S. = BOTTOM NEAR SIDE

NOTES:
 1. PLATES MUST BE INSTALLED ALTERNATELY LEFT AND RIGHT. TWO PLATES OF THE SAME SHOULD NOT BE ADJACENT TO EACH OTHER.
 2. IT IS THE RESPONSIBILITY OF THE USER TO ENSURE THAT THE PLATE ARRANGEMENT CONFORMS TO THIS DRAWING AFTER REMOVAL AND OR REPLACEMENT OF PLATES.
 3. TIGHTEN MACHINE ONLY SUFFICIENTLY TO PREVENT LEAKAGE AT OPERATING PRESSURE. DO NOT TIGHTENING BELOW THE PLATAGE DIMENSION SHOWN

This drawing and/or literature is the property of APV Canada Inc. and is confidential and may not be used, copied or reproduced in any way, in whole or in part, without the express written permission of APV Canada Inc.
 Ce dessin et/ou cette documentation technique est la propriété de APV Canada Inc. et est confidentiel, et ne peut pas être utilisé, copié ou reproduit d'aucune façon, en tout ou en partie, sans avoir obtenu le consentement écrit de APV Canada Inc.

| Rev | Description | Par | Date (dd-mm-yy) | By |
|-----|-------------|-----|-----------------|----|
| | | | | |
| | | | | |
| | | | | |
| | | | | |

| LIST OF 20 ga. 316 S.S. PLATES REQUIRED | | | |
|---|----|-------|----|
| TYPE | 15 | TYPE | 14 |
| L11 | 1 | R11 | 1 |
| L42 | 1 | R14 | 1 |
| | | KR11 | 1 |
| TOTAL | 16 | TOTAL | 16 |

APV Thermal Systems
 1 and 2nd Lines, 1000-10000
 6710 800-121

© Copyright 2003 by APV North America, Inc. All rights reserved.
 © Copyright 2003 par APV North America, Inc. Tous droits réservés.
 02.23.05
 02.23.05
 MACHINE NO. P-80020-A SERIAL NO. 8010-918
 MONITORIAL CODES: 2189