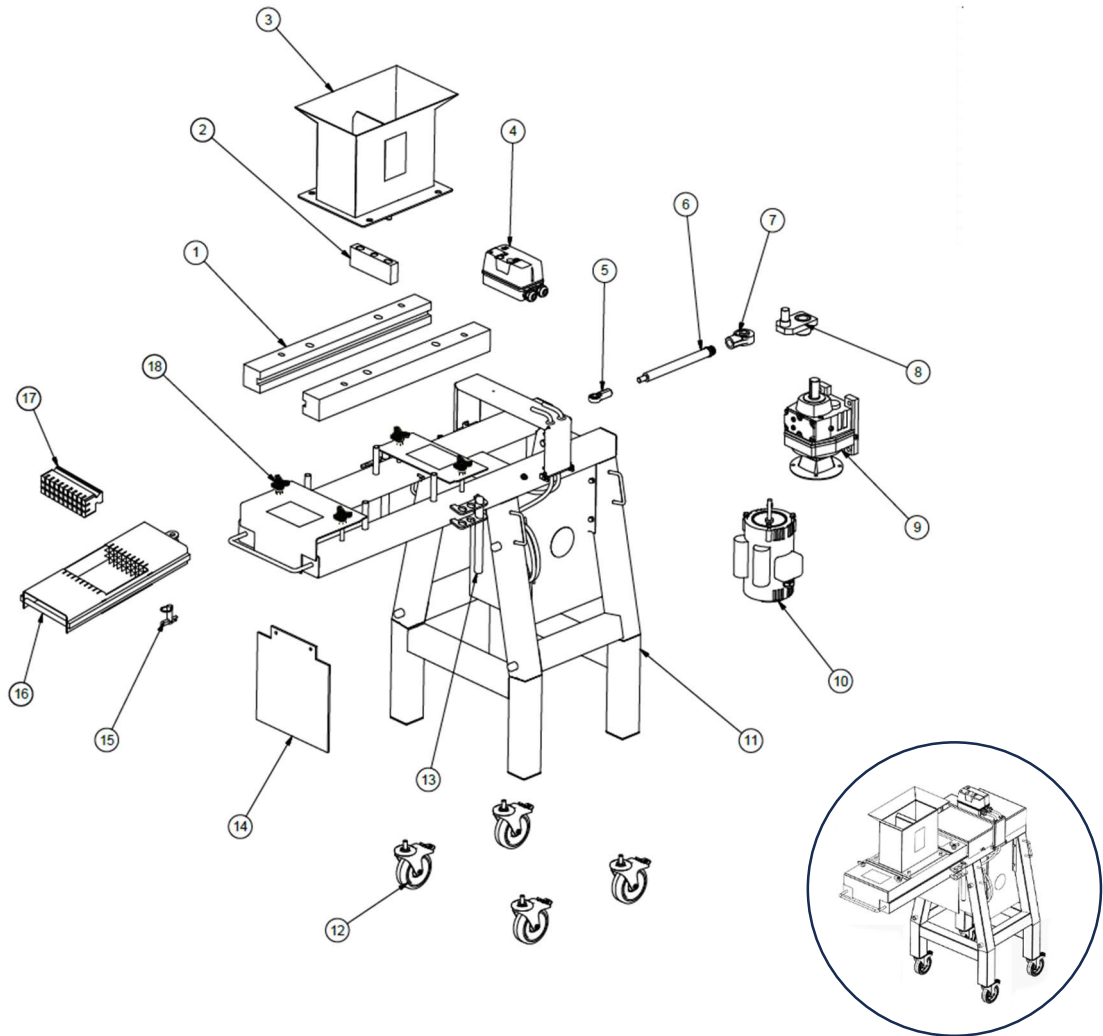


MAINTENANCE PARTS



ITEM	DESCRIPTION	7MF	11MF
1	SLIDING CHANNEL	5046-0710	5046-1111
2	STOPPER	5046-0711	5046-1121
3	HOPPER	5046-0716	10531-02-0200
4	CONTROL BOX	5046-0707	
5	ROD END	5046-0712	
6	DRIVE SHAFT	5046-0713	5046-1132
7	PLASTIC BEARING	5046-0516	
8	CAM ASSEMBLY	5046-0721	5046-1106
9	GEARMOTOR	REF. SN	REF. SN
10	MOTOR	REF. SN	REF. SN
11	CURD MILL FRAME	5046-0701	10531-01-0100

ITEM	DESCRIPTION	7MF	11MF	
12	SWIVEL WHEEL WITH BRAKE	5575-5104		
13	ADJUSTMENT PIN	5046-0762		
14	PROTECTION FLAP	5046-0706	5046-1107	
15	QUICK PIN	5046-0617		
16	CUTTING CARRIAGE	0.50"	5046-0752	5046-1118
		0.625"	5046-0751	5046-1119
		0.75"	5046-0750	5046-1120
17	LAST CUT PUSHER PLATE	0.50"	5046-0765	5046-1177
		0.625"	5046-0766	5046-1178
		0.75"	5046-0767	5046-1179
18	3 LOBES KNOB	8031-6187		

*The name and part number of each item required must be included when ordering as well as the equipment's serial number.